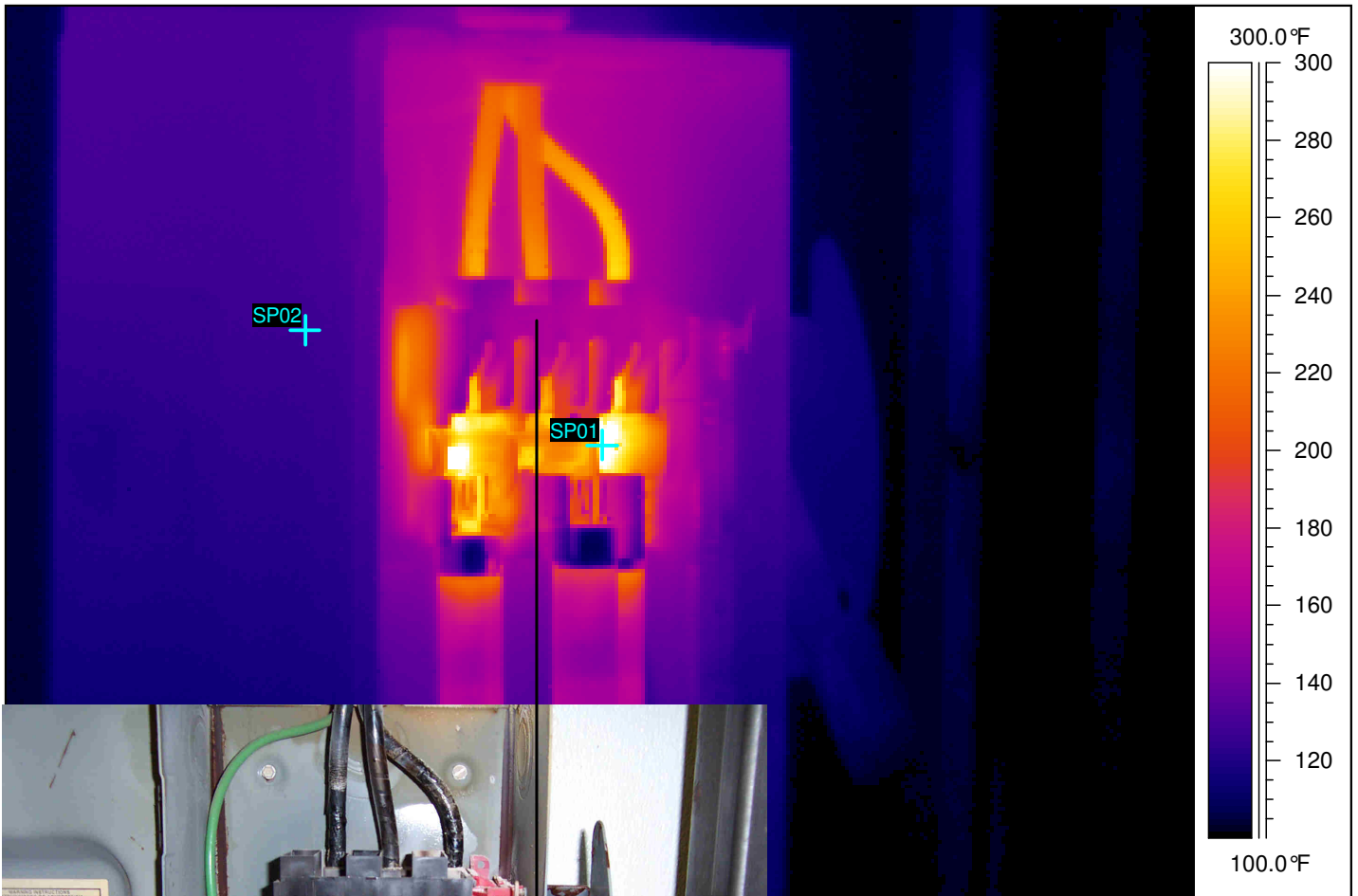


MCC Power Correction Capacitor Disconnect



IR Text Comment		Value			
Location		MCC Power Correction Capacitor Disconnect			
Equipment		Capacitor Bank Disconnect			
Spot 1	357.4 °F	Spot 2	127.3 °F	RISE	230.1 °F

NOTE: The disconnect is STILL ENERGIZED although the switch handle shows it is open. The switch contact assembly is welded closed. Lockout / Tagout MCC. TEST BEFORE TOUCH!
Replace disconnect and wiring.